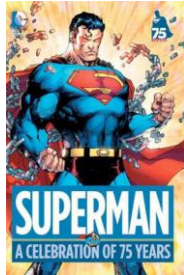
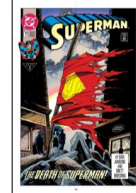
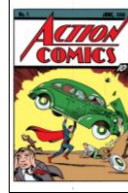


## Understanding Superman

We will pull examples from various issues of *Superman* to help us better understand the evolution of comic literature. If you are absent from class, you can review this presentation to review missed examples, but you will need to get discussion notes from a peer or come to OP.

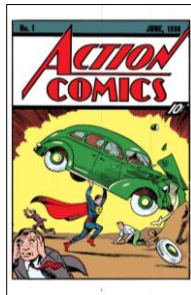


Page numbers may vary, depending on the version of the text you are reading – the page numbers used in this presentation are from the Comixology versions of *Superman: A Celebration of 75 Years*.



### *Action Comics 1*

Write brief, analytical bullet-points focusing on panel layout, shape, transitions, and gutters. Then think about art style, coloring, lettering, text boxes, and language.



### *Action Comics 1*

Write brief, analytical bullet-points focusing on panel layout, shape, transitions, and gutters. Then think about art style, coloring, lettering, text boxes, and language.



*Action Comics 1*

Write brief, analytical bullet-points focusing on panel layout, shape, transitions, and gutters. Then think about art style, coloring, lettering, text boxes, and language.



*Action Comics 1*

Write brief, analytical bullet-points focusing on panel layout, shape, transitions, and gutters. Then think about art style, coloring, lettering, text boxes, and language.



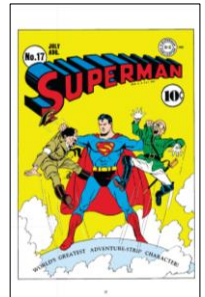
*Action Comics 1*

Write brief, analytical bullet-points focusing on panel layout, shape, transitions, and gutters. Then think about art style, coloring, lettering, text boxes, and language.



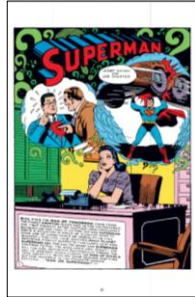
*Action Comics 17*

Write brief, analytical bullet-points focusing on panel layout, shape, transitions, and gutters. Then think about art style, coloring, lettering, text boxes, and language.



*Action Comics 17*

Write brief, analytical bullet-points focusing on panel layout, shape, transitions, and gutters. Then think about art style, coloring, lettering, text boxes, and language.

*Action Comics 17*

Write brief, analytical bullet-points focusing on panel layout, shape, transitions, and gutters. Then think about art style, coloring, lettering, text boxes, and language.

*Action Comics 17*

Write brief, analytical bullet-points focusing on panel layout, shape, transitions, and gutters. Then think about art style, coloring, lettering, text boxes, and language.

*Action Comics 17*

Write brief, analytical bullet-points focusing on panel layout, shape, transitions, and gutters. Then think about art style, coloring, lettering, text boxes, and language.



*Superman 53*

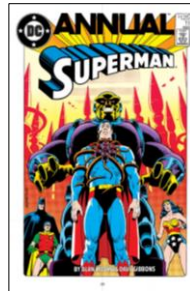
Write brief, analytical bullet-points focusing on panel layout, shape, transitions, and gutters. Then think about art style, coloring, lettering, text boxes, and language.

*Superman 53*

Write brief, analytical bullet-points focusing on panel layout, shape, transitions, and gutters. Then think about art style, coloring, lettering, text boxes, and language.

*Superman Annual 11*

Write brief, analytical bullet-points focusing on panel layout, shape, transitions, and gutters. Then think about art style, coloring, lettering, text boxes, and language.

*Superman Annual 11*

Write brief, analytical bullet-points focusing on panel layout, shape, transitions, and gutters. Then think about art style, coloring, lettering, text boxes, and language.

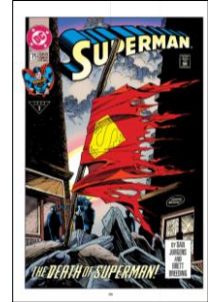


*Superman Annual 11*

Write brief, analytical bullet-points focusing on panel layout, shape, transitions, and gutters. Then think about art style, coloring, lettering, text boxes, and language.

*Superman 75*

Write brief, analytical bullet-points focusing on panel layout, shape, transitions, and gutters. Then think about art style, coloring, lettering, text boxes, and language.

*Superman 75*

Write brief, analytical bullet-points focusing on panel layout, shape, transitions, and gutters. Then think about art style, coloring, lettering, text boxes, and language.

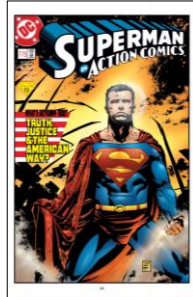
*Superman 75*

Write brief, analytical bullet-points focusing on panel layout, shape, transitions, and gutters. Then think about art style, coloring, lettering, text boxes, and language.



### *Superman 775*

Write brief, analytical bullet-points focusing on panel layout, shape, transitions, and gutters. Then think about art style, coloring, lettering, text boxes, and language.



### *Superman 775*

Write brief, analytical bullet-points focusing on panel layout, shape, transitions, and gutters. Then think about art style, coloring, lettering, text boxes, and language.



### *Superman 775*

Write brief, analytical bullet-points focusing on panel layout, shape, transitions, and gutters. Then think about art style, coloring, lettering, text boxes, and language.



### *Action Comics 0*

Write brief, analytical bullet-points focusing on panel layout, shape, transitions, and gutters. Then think about art style, coloring, lettering, text boxes, and language.



### *Action Comics 0*

Write brief, analytical bullet-points focusing on panel layout, shape, transitions, and gutters. Then think about art style, coloring, lettering, text boxes, and language.



### *Action Comics 0*

Write brief, analytical bullet-points focusing on panel layout, shape, transitions, and gutters. Then think about art style, coloring, lettering, text boxes, and language.

