

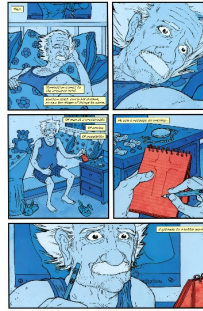
Coloring



The Wake

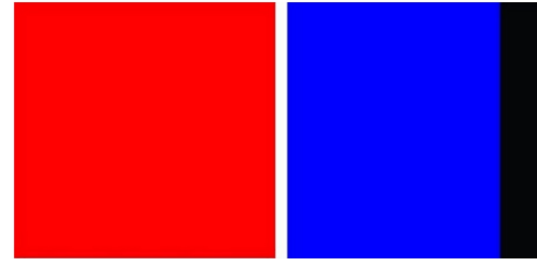


Daredevil



Manhattan Projects

Based off of the color scheme – color & amount
– which character does the following color
scheme represent?



Wonder Woman
Spider-man
Deadpool
Nightcrawler

Based off of the color scheme – color & amount
– which character does the following color
scheme represent?



Spider-Woman
Thor
Supergirl
Wolverine

Based off of the color scheme – color & amount
– which character does the following color
scheme represent?



Green Arrow
Green Lantern
Hulk
Brainiac 5

Based off of the color scheme – color & amount
– which character does the following color
scheme represent?



Nightwing
Psylocke
Hawkeye
Raven

Based off of the color scheme – color & amount
– which character does the following color
scheme represent?



Superman
Captain Marvel
Batgirl
Cyclops

Based off of the color scheme – color & amount
– which character does the following color
scheme represent?



Storm
Black Widow
Batman
Ghost Rider

Based off of the color scheme – color & amount
– which character does the following color
scheme represent?



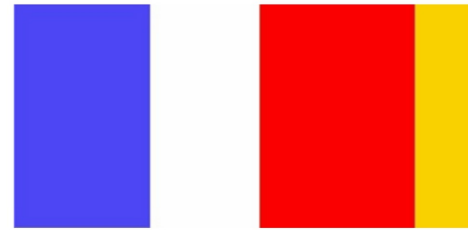
Flash
Shazam
Daredevil
Iron Man

Based off of the color scheme – color & amount
– which character does the following color
scheme represent?



Human Torch
The Flash
Iron Man
Firestorm

Based off of the color scheme – color & amount
– which character does the following color
scheme represent?



Wonder Woman
Captain America
Thor
Colossus

Based off of the color scheme – color & amount
– which character does the following color
scheme represent?



Batman
Black Panther
Catwoman
Black Cat

History of Coloring Process

- , , and – when projected together on a screen in various combinations can reproduce any color on the visible spectrum
- 3 color combination called additive – added up to pure white light
- , , and - subtractive because by filtering out light, any hue in the visible spectrum can be created
- Subtractive effect achieved through transparent substances – cellophane, colored glass, water colors,



Impact of Coloring on Comics

- Colors selected for
- Strongly contrasted with each other
- No color stood out
- Superheroes always in bold colors to make them vibrant and bold
- Lacked single color saturation, greatly reduced the potential of comics



(1963)

Coloring of Superhero Costumes

- Costume coloring stayed the for each panel
- Limited coloring actually helped create iconic superhero costumes, through , vibrantly colored costumes
- Flat colors also emphasized , defining the heroes' actions



"Man or Superman?"
(1942)

Coloring Changes in Comics

- Europe had superior comic printing
- By the late American artists were inspired by European coloring
- Color became more central to
- Colors expressed dominant
- Tones and modeling added



(1979)

Changes in Comic Coloring



Action Comics 1
(1938)



"Must There Be a
Superman?"
(1972)



"The Boy Who Stole
Superman's Cape"
(2012)

Coloring Styles

- Black and white – ideas of art communicated more
- colors – forms take on more significance
- Expressive colors – and become more apparent

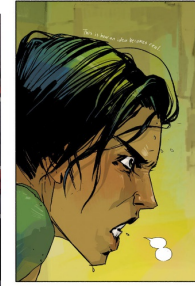


Where Color is Used in Comics

- Panel Borders
- Gutter
- Lettering
- Dialogue Boxes
- Panels
- Accenting



Deadpool



Saga



Harbinger

Purpose of Colors in Comics

- Create
- Distinguish
- Emphasize items or
- Represent change
- Show thoughts



Deadpool



Saga



Harbinger